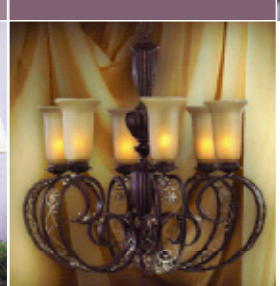
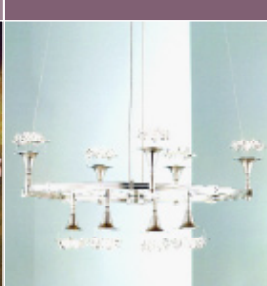
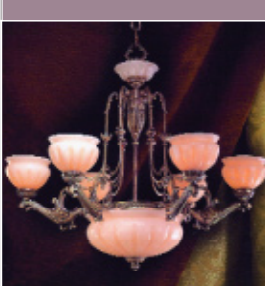


Discovering the *art* of the Chandelier



The chandelier has symbolized luxury and wealth since the 15th century. The powerful perception lent to it by kings has proven timeless. In the 21st century, a chandelier breathes an aristocratic air into any room.

The earliest Gallic designs – those iron circles of the dark age – have proved such perfect achievements of balance and beauty. These same styles have endured, ignoring the passage of time, even through the electric age, when their basic candle-bearing design has become obsolete.

The swinging pendant that inspired the young Galileo to articulate that law of the pendulum, circa 1580, was not very different from the glowing in the dark nights of Europe for 500 years to follow. Even the homeanddecor.ca

lighting of ancient Rome resembles and still inspires chandelier designs of today.

Marriages, revolutions, conquests, gods, technology, nature and fashion affect the design of all decorative objects, including chandeliers. And footprints of history can be seen in the shapes and symbols cast in metal, carved of wood, and molded in glass.

With the knowledge of an object's connection to history and a grasp of the secrets it holds comes an appreciation beyond utility and beauty that, with something as inherently gorgeous and glamorous as chandeliers, is likely to become a passion.

To complete your journey through the
As seen in Home and Décor

world of chandeliers, visit Litemode's 23,000-sq.-ft. facility of lighting, chandeliers and more, where you'll travel through time by

Walking through galleries of lighting and accessories that is bound to spark your imagination and inspire you. **HD**

Litemode

8355 Jane St.
Concord
905-738-8889

Monday to Wednesday 9 a.m. to 6 p.m.
Thursday 9 a.m. to 9 p.m.
Friday & Saturday 9 a.m. to 6 p.m.

www.litemode.ca